

MAY 29

2019

UNION UPDATE

LOCAL 1000  
**SEIU**  
Stronger Together



# Remembering Jim Holverstott

**An activist in his union and community  
1946 - 2019**

Family, friends and union brothers and sisters are mourning the passing of Jim Holverstott last week. He leaves a legacy of service to California through nearly 40 years working at CHP and will be remembered for his efforts as a union leader and community activist.

Raised in Sacramento, he graduated from U. C. Davis and served as a drill sergeant in the U. S. Army before he joined the state as a computer programmer in 1971.

His role as union activist came nearly 30 years after becoming a state employee. "For years I believed in the union and supported it," he said in a 2012 interview. He attended job steward training in 2000, and "... once I did, I became very active. I enjoy helping people through organizing and representation."

He spent thousands of hours as a union volunteer. He was elected to the post of vice president/chief steward of DLC 784 in Sacramento, and ultimately rose to the rank of DLC president. He also served on Local 1000's

Chief Stewards Committee and was active in politics since the early 1970s, phone banking and precinct walking on every major political campaign.

Holverstott was one of the few state workers who remembers life before the Dills Act—which allowed public employees to bargain collectively beginning in 1977. "California's working families are all better off because of unions. I'm proud to be part of that," he said in 2012.

Holverstott's desire to help people was a consistent thread in his life. He volunteered for many years as a counselor on Sacramento's Suicide Prevention Hotline. A resident of Davis, he also served on the board of the Yolo County chapter of the National Alliance on Mental Illness.

"I believe in helping people who are in need," Holverstott often said. "Whether I do it through my union or a community group, that's what I do."

**Join us at Jim's memorial Thursday, May 30, 5-7 p.m.**

Local 1000 headquarters, 1808 14th Street, Sacramento 95811

## PROFESSIONAL DEVELOPMENT DAYS - USE THEM OR LOSE THEM!

All employees accumulate two Professional Development Days (PDD) during each fiscal year (July 1 – June 30). Those days are separate from any other provision afforded under the contract. PDD days are to be used at the employee's discretion and are to be requested and approved in the same manner as vacation and annual leave. For more information, see Article 13 of your contract (Article 11 for Unit 21 employees).

**Questions about your contract rights or membership status?**

**Call the Local 1000 Member Resource Center**

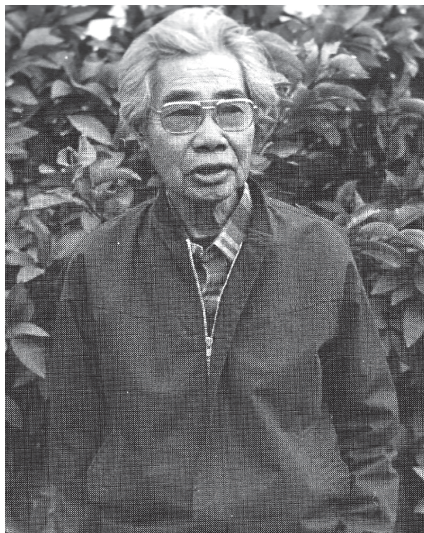


The Local 1000 Member Resource Center connects you with a well-trained, knowledgeable union representative who can answer questions about representation or other issues.

Representatives are well versed in state worker needs ranging from filing a grievance, to finding the address of a meeting, to learning about discounts and savings on theme park admissions and other benefits.

**866.471.SEIU (7348)**

## PHILIP VERA CRUZ: PAVING THE WAY FOR IMMIGRANT LABOR RIGHTS



***“The movement must go beyond its leaders.”***

- Philip Vera Cruz

Developing a strong contingent of leaders is a priority of Local 1000, and we draw inspiration for our efforts from labor leaders throughout our past. As part of Asian Pacific Islander Heritage month, we celebrate both the accomplishments and contributions of Philip Vera Cruz, who was instrumental in the formation of one of the strongest agricultural worker unions in California - the United Farm Workers.

Born in the Philippines, Vera Cruz settled in California, where he became a farm worker and joined the AFL-CIO-affiliated National Farm Labor Union. He was a dedicated organizer in the Agricultural Workers Organizing Committee, composed primarily of Filipino American laborers.

It was in his Delano local that he learned the importance of developing new leaders and the rallying cry, “the movement must go beyond its leaders.”

In September of 1965, he was part of the famous vote to strike against the Delano grape growers, and it was Vera Cruz—working with Cesar Chavez and Dolores Huerta, among others—who organized the sit-ins at labor camps and picket lines at the vineyards.

Realizing the power of organizing and the solidarity it could accomplish, the National Farm Labor Union merged with the National Farm Workers of America in 1966. The Delano Grape Strike continued until 1970 and changed the face of farm labor in California and beyond.

# UNION INFORMATION

### Resource Center

Monday-Friday  
7 a.m. to 7 p.m.  
866.471.SEIU (7348)

### Website

[seiu1000.org](http://seiu1000.org)

### Connect with Local 1000

Facebook  
[facebook.com/seiu1000](https://facebook.com/seiu1000)

YouTube  
[youtube.com/seiu1000](https://youtube.com/seiu1000)

Twitter  
[twitter.com/seiu1000](https://twitter.com/seiu1000)



## Membership has its benefits!

You can save hundreds of dollars with member-only prices

Your Local 1000 membership grants you exclusive access to discounts and savings on local goods and services, travel, theme park admissions and other entertainment venues. Enjoy affordable group rates and discounts on insurance and service plans that include auto, home, pet and life coverage. Here are just a few examples of the opportunities working families have to save money:



Become a member today and start saving  
[seiu1000.org/joinus](http://seiu1000.org/joinus)